

Respiration

Adequate or Inadequate?

Breathing rate outside normal range.

Rhythm may be irregular at rest.

Inadequate depth.

Shallow volume.

Diminished or absent breathing sounds.

Unequal or inadequate chest expansion.

Increased effort and use of accessory muscles to breathe.

Usually regular rhythm

Rhythm may be slightly irregular influenced by talking

Breath sounds are present and equal.

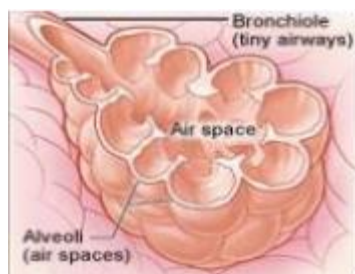
Chest expansion is adequate and equal.

Minimal effort.

Adequate tidal volume.

WEDNESDAY

OCTOBER 19, 2016



One of the leading causes of death in America.

Leading cause is smoking.

Progressive disease.

No cure for.

Damaged air sacs in a person's lungs causing loss of elasticity

Airways to the body's lungs are damaged limiting amount of air being passed, resulting in a hoarse cough.

Shortness of breath, wheezing and chest tightness

Sand Lake Ambulance 3653 Route 43, West Sand Lake, NY 12196

Seminar

@ Sand Lake Ambulance

Featuring

Andy Stern
PC, CIC, EMT-P

Earn CME Credits

To attend please RSVP
to

leckert@sandlakeambulance.org

Refreshments provided
Class begins @ 7:00pm

VISIT OUR WEBSITE FOR
MORE INFORMATION:
<http://www.sandlakeambulance.org/category/training/cme/>

